



Havering

L O N D O N B O R O U G H

HEALTH OVERVIEW & SCRUTINY SUB-COMMITTEE AGENDA

7.00 pm	Tuesday 4 January 2022	Remote meeting
----------------	-----------------------------------	-----------------------

Members 6: Quorum 3

COUNCILLORS:

Conservative Group (3)

Nisha Patel (Chairman)
Ciaran White (Vice-Chair)
Philippa Crowder

Residents' Group (1)

Nic Dodin

Independents Residents' Group (1)

David Durant

North Havering Residents' Group (0)

Vacancy

**For information about the meeting please contact:
Anthony Clements 01708 433065
anthony.clements@oneSource.co.uk**

What is Overview & Scrutiny?

Each local authority is required by law to establish an overview and scrutiny function to support and scrutinise the Council's executive arrangements. Each overview and scrutiny sub-committee has its own remit as set out in the terms of reference but they each meet to consider issues of local importance.

The sub-committees have a number of key roles:

1. Providing a critical friend challenge to policy and decision makers.
2. Driving improvement in public services.
3. Holding key local partners to account.
4. Enabling the voice and concerns to the public.

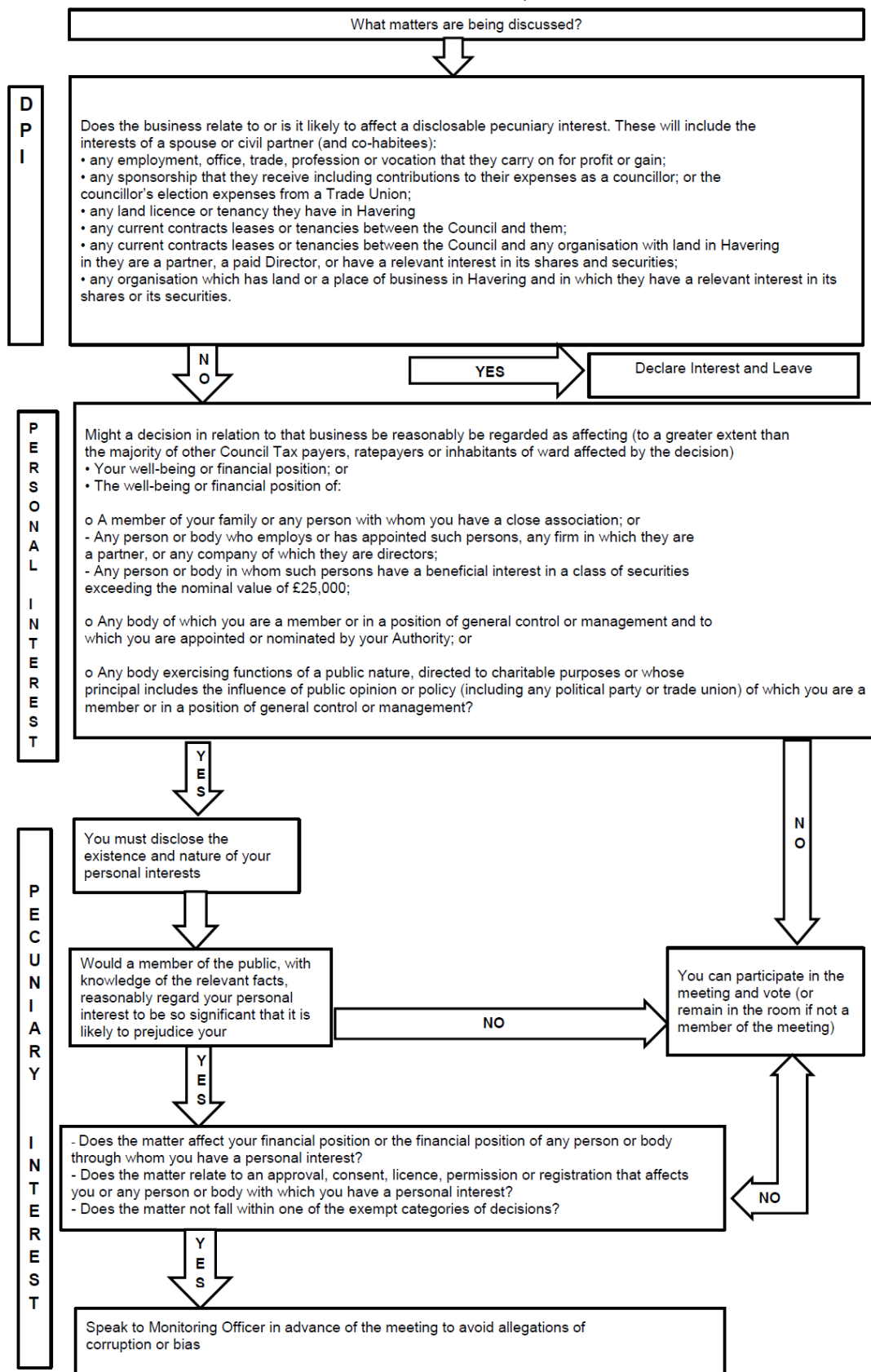
The sub-committees consider issues by receiving information from, and questioning, Cabinet Members, officers and external partners to develop an understanding of proposals, policy and practices. They can then develop recommendations that they believe will improve performance, or as a response to public consultations. These are considered by the Overview and Scrutiny Board and if approved, submitted for a response to Council, Cabinet and other relevant bodies.

Sub-Committees will often establish Topic Groups to examine specific areas in much greater detail. These groups consist of a number of Members and the review period can last for anything from a few weeks to a year or more to allow the Members to comprehensively examine an issue through interviewing expert witnesses, conducting research or undertaking site visits. Once the topic group has finished its work it will send a report to the Sub-Committee that created it and will often suggest recommendations for the Overview and Scrutiny Board to pass to the Council's Executive.

Terms of Reference:

Scrutiny of NHS Bodies under the Council's Health Scrutiny function

DECLARING INTERESTS FLOWCHART – QUESTIONS TO ASK YOURSELF



AGENDA ITEMS

1 ANNOUNCEMENTS

The Chairman will announce details of the operation of the meeting which will be held via remote video conferencing.

2 APOLOGIES FOR ABSENCE AND ANNOUNCEMENT OF SUBSTITUTE MEMBERS

(if any) – receive.

3 DISCLOSURES OF INTEREST

Members are invited to disclose any interests in any of the items on the agenda at this point of the meeting. Members may still disclose an interest in an item at any time prior to the consideration of the matter.

4 ENGAGEMENT ON PROPOSALS FOR HEALTH AND WELLBEING HUB AT ST GEORGE'S HOSPITAL (Pages 1 - 20)

Report attached.

Zena Smith
Democratic and Election Services Manager



HEALTH OVERVIEW AND SCRUTINY SUB-COMMITTEE, 4 JANUARY 2022

Subject Heading:

Engagement on proposals for a Health and Wellbeing Hub at St George's Hospital

Report Author and contact details:

Anthony Clements, Principal Democratic Services Officer, London Borough of Havering

Policy context:

NHS officers will detail proposals for the new St George's Hospital health and wellbeing hub.

Financial summary:

No impact of presenting information itself.

SUMMARY

NHS officers will present to Members information on the development of a new health and wellbeing hub at the former St George's Hospital site in Hornchurch.

RECOMMENDATIONS

That the Sub-Committee scrutinises the information presented and considers what, if any, comments it wishes to make as part of the engagement process.

REPORT DETAIL

Members will be aware that the site of the former St George's Hospital site in Hornchurch has remained empty for some years. The North East London Clinical Commissioning Group is currently undertaking an engagement process on proposals to develop a Health and Wellbeing Hub at the site.

The Sub-Committee is asked to scrutinise the proposals (details attached) and to consider any comments on the planned new hub that it may wish to pass back to the Clinical Commissioning Group as part of the engagement process.

IMPLICATIONS AND RISKS

Financial implications and risks: None of this covering report.

Legal implications and risks: None of this covering report.

Human Resources implications and risks: None of this covering report.

Equalities implications and risks: None of this covering report.

Environmental and Climate Change implications and risks: None of this covering report.

BACKGROUND PAPERS

None.



North East London
Clinical Commissioning Group

Engagement on proposals for a Health and Wellbeing Hub at St George's Hospital





St George's Health and Wellbeing Hub

Listening event 27/11/21



Agenda

- **Welcome**
- **Background**
- **Our proposals**
- **Why the hub makes sense**
- **Overview of services**
- **Frailty - closer look**
- **Outpatients - closer look**
- **GP services - closer look**
- **Overall benefits**
- **Questions**

We have a clear clinical vision – to make the very best quality care available to people living in Havering and neighbouring areas. At the heart of our vision is keeping local people well and providing as much care as possible close to people's homes.

Background

- In autumn 2019, the Government announced it would allocate £17.4 million towards funding the project. Local GPs have been working with NHS partners from our local Clinical Commissioning Group, North East London NHS Foundation Trust (NELFT) and Barking, Havering and Redbridge University Hospitals NHS Trust (BHRUT) to develop the plans
- Planning permission for the development was granted by Havering Council earlier this month (November 2021)
- This new community base aims to provide integrated primary, community, mental health and local authority care services on a single, local community site located at the former St George's Hospital site in Suttons Lane, Hornchurch

We are seeking views from patients, carers, representatives from community and voluntary sector organisations, parents and guardians, children and young people, elderly people, health and social care professionals, regulators and the public in Havering and the neighbouring areas.

Under our proposals:

- We would bring together a range of services under one roof, in a brand-new fit-for-purpose Integrated Health and Wellbeing Hub in the community
- Renal dialysis would move from Queen's to the new Hub
- Some local GP practices within a 2-mile radius of the Hub would relocate there
- Some frailty, outpatient, wellbeing, mental health and early diagnostic services for cancer would be provided and the local authority would provide some adult and children services. Some space would be made available for wellbeing services and for local voluntary sector services.

Why the health and wellbeing hub makes sense

Better patient care...

- The hub would enable a range of services to operate from one building, supporting the provision more patient-centred integrated care. Patients would be able to access more services at the same time, in a purpose-built, convenient location. Resulting in increased independence for patients; and better patient outcomes

... in a high quality, flexible space...

- The hub space would be flexible, so different health and care services will be able to be provided from the same space, and used by different organisations. Some weeks we might need more of one outpatient clinic, another week we might need an extra mental health session.
- The hub would have the space to train new clinical staff
- The extensive landscaping would provide a relaxing environment for our patients and visitors and support people with memory loss.

... using taxpayers money wisely.

- A new, economical-to-run building, built to net zero carbon standards (ensuring it does minimum harm to the environment) with no backlog maintenance costs is good for taxpayers.
- Better management of patients' conditions in the community would result in fewer emergency unplanned visits and admissions – which reduces pressure on A&E, is better for patients and reduces costs

Overview of Services

Outpatient services could include...

- Vascular; Diabetes; Podiatry; Orthopaedics; Urology (prostate cancer); Maternity; Gastroenterology (physiology and bowel clinics); Phlebotomy; Psychology

Diagnostic services

- New mobile CT and MRI scanners planned; and a space for a Community Diagnostic Hub so we can detect cancers sooner. We listened to concerns during the planning consultation about the noise of scanners and will make sure they are installed in sound proof pods so they make less noise.

Frailty, mental health and community services

- Mental health and community services are in a variety of locations across, and sometimes out of the borough. Patients have to travel longer than necessary and teams are scattered across different sites. We plan to bring these services back to the hub location where they are best placed.

GP Services

- We want to relocate some local GP practices to the hub, especially those that are in buildings that are too small for the growing local population. This would make for a more pleasant experience; and the GP practices would be able to offer a wider range of services; more clinics; better access and better training facilities.

Renal services

- Renal dialysis does not need to be delivered from a major hospital. The hub would provide an improved healing setting for patients who spend up to 12 hours each week for months or years receiving treatment and would provide the space for training for self-dialysis which means patients can dialyse at their convenience without nursing supervision.

Frailty - closer look

Benefits for people:

- Early assessments for frail older people to prevent hospital admission
- An anticipated reduction of almost one third of frail elderly admission to Queens hospital as a result of attending the hub frailty service
- Delayed discharges can be reduced as the Frailty service will provide capacity for follow-up assessments and referral once person is discharged from hospital
- Direct access to diagnostics such as X-rays, which can also be used by the wider community if needed
- The Hub will also provide an escalation of care facility. This is a point of referral for deteriorating patients who need urgent assessment. People can then be provided with an appropriate care package and able to return home, referred to social services, or referred to hospital for specialist support where this is necessary
- Having diagnostics and clinical space under one roof, in a setting away from an acute hospital

Outpatients - closer look

Benefits for people:

- Triage and virtual clinics so that the patient is seen by the right person at the right time in the right place with the correct information available to make decisions at their first clinic
- Care closer to home
- Improved co-ordination and integration of care

GP services - closer look

Benefits for people:

- GP services based at the Hub will increase capacity for the growing population as well as provide better accommodation for patients and staff
- The Hub will provide career opportunities and attract a younger and more varied workforce into primary care
- GP services located in the same facility as diagnostics can help align and reduce delays in pathways of care

Overall benefits

Page 13

- Be flexible and adaptable in the face of unprecedented change due to Covid-19
- Go to the patient, and not the patient to us
- Enable patients to see more than one professional in a single visit
- Stop the patient telling their story to more than one health professional. This will be assisted by shared technology between the different teams
- Co-locate different health and care teams to enable improved communication through building informal relationships and shared development opportunities
- Build a shared knowledge of patients, helping us to communicate better with our patients
- Reduce handover of care to reduce the risk of patients 'falling through the gap'



Questions





Stakeholders, the public and patients are sharing their views on the new Hub from 22 November 2021 to 13 Feb 2022

For more information please go to our webpage:

<https://northeastlondonccg.nhs.uk/get-involved/engagement-begins-on-the-new-integrated-health-and-wellbeing-hub-in-hornchurch/>



This page is intentionally left blank

Letter to BHR HOSC Chairs

Dear Health Overview and Scrutiny Chairs,

I am writing to you on behalf of NHS partners involved in the proposals for a new Health and Wellbeing Hub at the former St George's Hospital site in Hornchurch. We want to let you know about our plans to engage local people and stakeholders on the proposals for the site as part of the next stage of this important health and care development.

As you will recall, in 2019, the Prime Minister announced in late 2019 that North East London Health and Care Partnership were to benefit from £17 million of funding to take forward plans for a new health and wellbeing centre at the former St George's Hospital site in Suttons Lane, Hornchurch.

NELFT has agreed to be the lead partner on this project, which also involves colleagues from North East London CCG (NEL CCG), our local acute trusts, primary care providers and specialist commissioning colleagues from NHS England (NHSE)

Due to the impact of the Coronavirus pandemic and the need for local health and care services to be reprioritised to manage our response to this, the progress with our proposals for the Health and Wellbeing Hub has been slower than we would have liked.

While NHS services remain extremely busy as we head into winter, partners are now ready to move forward with the development. We are working closely with NHS England to look at how we can meet national deadlines related to the funding requirements, which means we do have to work at pace.

We consider that the development of the site will be of interest to people living and working across your three boroughs and are therefore planning a 12 week period of engagement to give residents and stakeholders an opportunity to have their say on key aspects of the proposals.

We intend to start the engagement period in mid November, concluding in February 2022. We have developed a comprehensive communications and engagement plan, and will be working with Council partners, Healthwatch and other local voluntary sector organisations to make sure we reach out to as many people as we can.

The communications and engagement plan is attached for your consideration, and we would also like to organise a virtual meeting with all our local HOSC Chairs within the next week so you have an opportunity to ask questions ahead of your individual HOSC meetings in early November.

At your HOSC meetings we plan to present the communications and engagement plan and discuss the next steps so we can take into account the committees' **views of the process**.

During the engagement period we intend to attend the 14 Dec ONEL JHOSC (and other individual HOSC meetings as the timeline allows) in order to gather the views of the OSCs **on the proposals**.

We have asked Melissa Hoskins from the NEL CCG communications and engagement team to help facilitate the virtual meeting with you as Scrutiny Chairs, and she will also support NELFT in terms of liaison with your committee officers for the HOSCs and JHOSC.

We have also previously had useful feedback from both yourself and from Healthwatch on our engagement documents and other materials, which has been helpful in ensuring the language we use is clear and answers as many key questions as we can. We hope you will also support us with this – and our Communications lead will be in contact directly in the next week or so.

With best wishes and thanks for your support in advance

Henry Black

Accountable Officer
NELCCG

Dr Atul Aggarwal

Clinical Chair for Havering – NEL CCG
Clinical Lead for the St George's redevelopment project

Engagement on proposals for a Health and Wellbeing Hub in Hornchurch – starts Monday 22 November

North East London Clinical Commissioning Group (NEL CCG) is seeking feedback from local people and stakeholders on our plans for a new integrated health and wellbeing hub on the former St George's Hospital site in Havering.

Health and care partners across north east London have been working together for a number of years to design the hub, which proposes to bring together a range of health, social care and community services under one roof, in a brand-new fit-for-purpose facility.

In autumn 2019, the Government announced it would allocate £17.4million towards the funding of the project. Since then, local GPs have been working with NHS partners from the local clinical commissioning group, North East London NHS Foundation Trust (NELFT) and Barking, Havering and Redbridge University Hospitals NHS Trust (BHRUT) to develop the plans.

Planning permission for the development was granted by Havering Council earlier this month.

Local people and their representatives will be able to share their feedback on our proposals from today (22 November 2021) until midnight on Sunday 13 February 2022.

The new hub aims to provide integrated primary, community, mental health and local authority care services on one site. People from across Havering and its neighbouring boroughs of Redbridge and Barking and Dagenham will be able to receive help with keeping well, assessment, treatment, diagnostics and a wide range of support. It will also be a valuable community resource with space for local organisations

Under the proposals, some GP services would move to the new hub, alongside:

- early diagnostic services for cancer
- some outpatient services
- frailty services for older people
- mental health services
- health and wellbeing and early prevention services
- additional capacity for some services currently based in local hospitals.

Havering Council will be able to provide services for adults and children on site, and there will be space for local voluntary sector services.

The hub design includes community facilities, such as an integrated café, education facilities, and meeting spaces, as well as a sensory, dementia-friendly communal garden with a wetland area.

To find out more and share your views, you can read NEL CCG's engagement document which explains the proposals in more detail, and take part in an online questionnaire at <https://northeastlondonccg.nhs.uk/SGHhub>

There will also be a number of online listening events, with the first scheduled for Saturday 27 November, between 10am and 12noon. Details are also available on the North East London Health and Care Partnership website.

We are keen to speak to as many people as possible about our proposals. Please share this widely across your networks.